



GODDESS

## DIANA PPL

### Facial Lifting and Toning Treatment

For that special event that requires instant results, the Diana PPL micro-current facial can achieve a dramatic effect in only 30-minutes. Sagging facial muscles are not just stroked intermittently; they are made to work a minimum of 100 times and up to a maximum of 900 times in a half hour session. The sensation of the facial muscles being stimulated is experienced throughout the treatment and the results **are** visible.



#### Clients Benefits:

- Results can be seen and felt after 1 treatment
- Raises and lifts forehead and eyebrows
- Smooths "crow's feet"
- Smooths and lifts upper eye area
- Detoxifies lower eye area
- Lifts and defines the cheek area
- Tones and tightens sagging jaw line
- Firms and lifts the neck area
- Reduces formation of lines to the lip area
- Leaves skin, firm, toned and refreshed

#### System includes:

- Diana PPL Micro-current System
- 1 x Set Facial Probes
- 1 x Set (6) Facial Leads
- 200 units of Hypo-allergenic adhesive Facial Pads
- Goddess Collagen Gel (500ml)
- Goddess Mouth Shields
- Consultation Cards
- Point of Sale Leaflets
- Comprehensive Instruction Manual – CD
- Guild Accredited Certificate Training - Cheshire
- 12-months Guarantee



**\*Note: Workstation optional extra**

#### Salon Benefits:

- System uses both Probes and Facial Pads
- Excellent Results
- Competitively priced
- Excellent After Sales Support
- Full Technical Support
- Free Delivery

Goddess International Limited,  
The Innovation Centre, Sci-Tech Daresbury, Keckwick Lane, Daresbury, Cheshire, WA4 4FS  
Telephone: 01925 607371/01925 607370  
Email: [info@goddessinternational.co.uk](mailto:info@goddessinternational.co.uk) Web: [www.goddessinternational.co.uk](http://www.goddessinternational.co.uk)



GODDESS

## FACIAL LIFTING AND TONING TREATMENT

Tones and tightens Facial Muscles



**Benefits:**

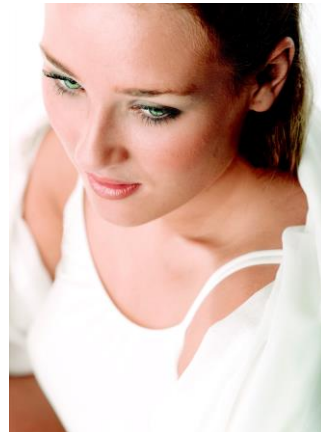
- Raises and lifts forehead and eyebrows
- Smoothes "crow's feet"
- Smoothes and lifts upper eye area
- Detoxifies lower eye area
- Lifts and defines the cheek area
- Tones and tightens sagging jaw line
- Firms and lifts the neck area
- Reduces formation of lines to the lip area

**Results can be seen and felt in only 30-minutes**

For that special event that requires instant results, the Diana PPL Micro-current facial can achieve a dramatic effect in only 30-minutes.

This treatment uses individual electrodes placed on the lower facial muscles and probes around the more sensitive eye areas.

Sagging facial muscles are not just stroked intermittently; they are made to work between a minimum of 100 times and up to a maximum of 900 times in a half hour session.



The sensation of the facial muscles being stimulated is experienced throughout the treatment and the results are visible.

<b>APPROXIMATE TREATMENT COSTS</b>			
30-minute Treatment			£ 40.00
(Course of 10 Treatments)			£ 350.00
<b>POTENTIAL PROFIT PER YEAR</b>			
(Based on only 5 Treatments per Week)			
Cost Per Treatment	Product Cost	Profits Per Week	Yearly Profits
£40.00	£3.00	£185.00	£9,620.00
<b>Watch the Muscles work and feel the instant effect</b>			
<b>THE PERFECT ALTERNATIVE TO PLASTIC SURGERY</b>			